

YK400XR

Standard type: Small type

Low cost high performance model

- Arm length 400mm
- Maximum payload 3kg



Ordering method

YK400XR		150			RCX340-4											
Model	Return-to-origin method S: Sensor T: Stroke end	Z axis stroke	Hollow shaft No entry: None S: With hollow shaft	Cable 3L: 3.5m 5L: 5m 10L: 10m	Controller / Number of controllable axes	Safety standard	Option A (OP.A)	Option B (OP.B)	Option C (OP.C)	Option D (OP.D)	Option E (OP.E)	Absolute battery 4: 4 pcs. 3: 3 pcs. 2: 2 pcs. 1: 1 pc. 0: 0 pc.				

Specify various controller setting items. RCX340 ▶ **P.502**

Specifications

	X-axis	Y-axis	Z-axis	R-axis
Axis specifications				
Arm length (mm)	225	175	150	-
Rotation angle (°)	+/-132	+/-150	-	+/-360
AC servo motor output (W)	200	100	100	100
Deceleration mechanism				
Speed reducer	Harmonic drive	Harmonic drive	Ball screw	Belt speed reduction
Transmission method	Direct-coupled			Timing belt
Motor to speed reducer				
Speed reducer to output	Direct-coupled			Timing belt
Repeatability ^{Note 1} (XYZ: mm) (R: °)	+/-0.01		+/-0.01	+/-0.01
Maximum speed (XYZ: m/sec) (R: °/sec)	6		1.1	2600
Maximum payload (kg)	3 (Standard specification), 2 (Option specifications ^{Note 4})			
Standard cycle time: with 2kg payload ^{Note 2} (sec)	0.45			
R-axis tolerable moment of inertia ^{Note 3} (kgm ²)	0.05kgm ² (0.5kgfcm ²)			
User wiring (sq x wires)	0.2 x 10			
User tubing (Outer diameter)	φ4 x 3			
Travel limit	1.Soft limit 2.Mechanical stopper (X,Y,Z axis)			
Robot cable length (m)	Standard: 3.5 Option: 5,10			
Weight (kg)	17			

Note 1. This is the value at a constant ambient temperature. (X,Y axes)
 Note 2. When reciprocating 300mm in horizontal and 25mm in vertical directions and performing the coarse positioning arch operation.
 Note 3. It is necessary to input the moment of inertia in the actual operating environment.
 Note 4. Maximum payload of option specifications (with user wiring/tubing through spline type) is 2kg.

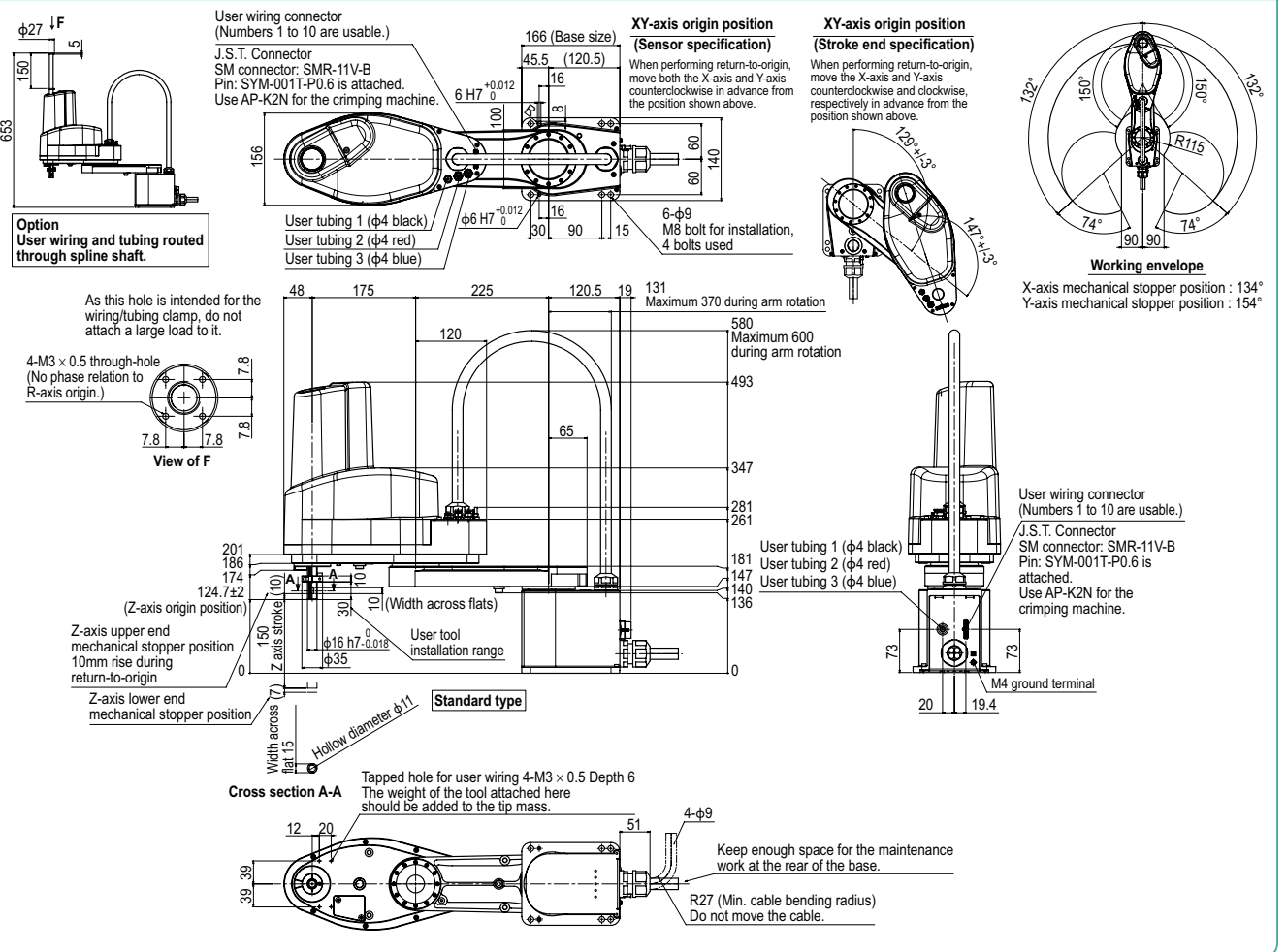
Controller

Controller	Power capacity (VA)	Operation method
RCX340	1000	Programming / Remote command / Operation using RS-232C communication

Note. "Harmonic" and "Harmonic drive" are the registered trademarks of Harmonic Drive Systems Inc.
 Note. The movement range can be restricted by adding the X- and Y-axis mechanical stoppers. (The maximum movement range was set at shipment.)
 See our robot manuals (installation manuals) for detailed information.
 Note. To set the standard coordinates with high accuracy, use a standard coordinate setting jig (option). Refer to the user's manual (installation manual) for more details.

Our robot manuals (installation manuals) can be downloaded from our website at the address below:
<http://global.yamaha-motor.com/business/robot/>

YK400XR



APPLICATION
 Linear conveyor / modules
 LCM100

TRANSERVO
 Compact single-axis robots

FLIP-X
 Single-axis robots

PHASER
 Linear motor single-axis robots

XX-X
 Cartesian robots

YK-X
 SCARA robots

YP-X
 Pick & place robots

CLEAN
 CONTROLLER INFORMATION

Orbit / Triv type
 Small / Medium type
 Large type
 Walk-mount / Inverse type
 Dust-proof & drip-proof type