

RDV-X/RDV-P

Support software for PC

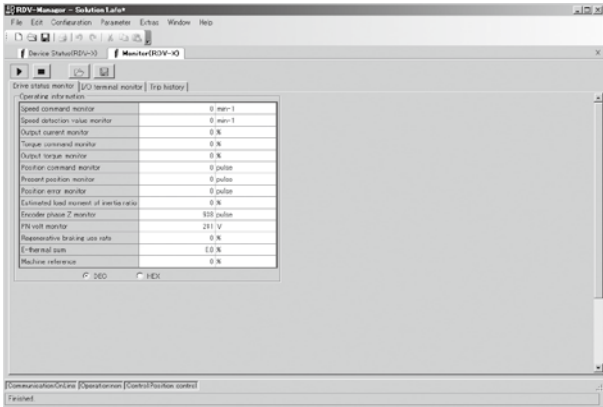
RDV-Manager Configuration Software

RDV-Manager is software for RDV-X/RDV-P. Using the Windows operating computer, it is possible to set parameters, to monitor the position, speed and torque and to have graphics displayed, assuring pleasant and easy operation in the Windows Vista, Windows 7 or Windows 8 / Windows 8.1 environment.

Features

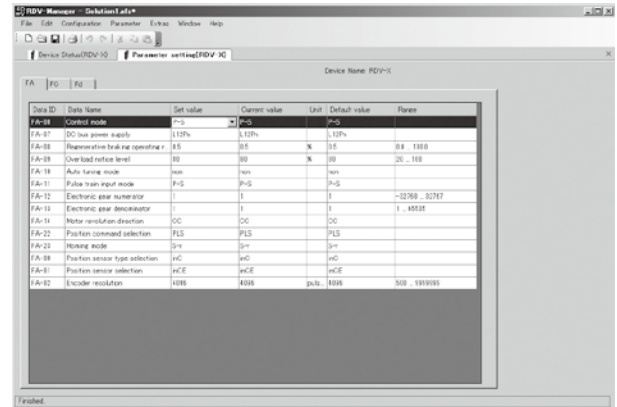
1 Monitoring function

It is possible to monitor the operation condition and output state in real time. Additionally, the terminal can be operated forcibly to check the operation.



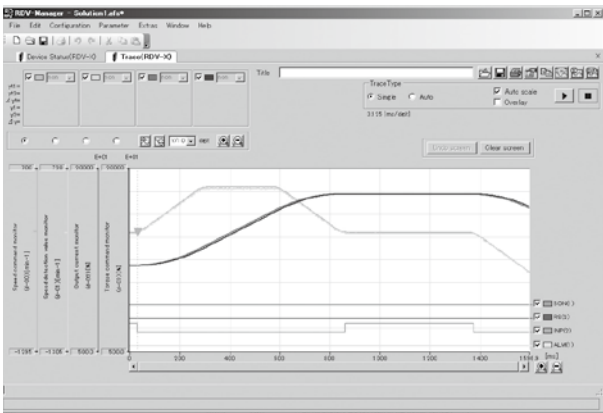
2 Setting parameters

It is possible to set, change, print and store the parameters.



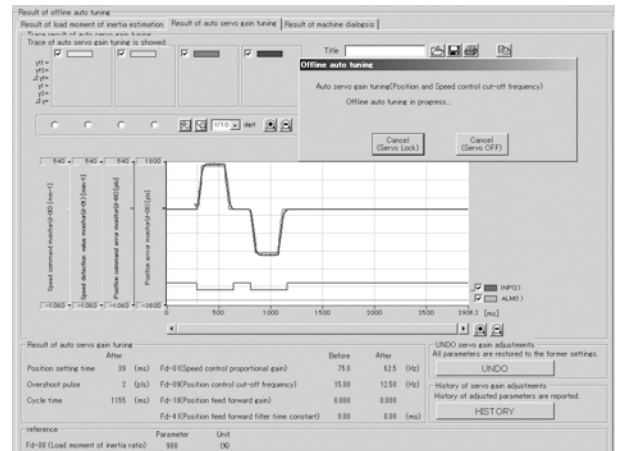
3 Operation tracing function

It is possible to have the servo motor speed and electric current displayed in the form of graphics.



4 Offline auto tuning function

The load moment of inertia can be estimated and the automatic servo gain can be adjusted.



Communication cable for PC supporting software RDV-Manager (3m)

Communication cable to connect PC and a controller.



Model	KEF-M538F-00
-------	--------------

Support software RDV-Manager

RDV-Manager is RDV-X / RDV-P dedicated software.



Model	KEF-M4966-00
-------	--------------

Environment

OS	Microsoft Windows Vista(32bit) ^{Note 1} / 7(32bit/64bit) / 8, 8.1(32bit/64bit)
CPU	Pentium4 1.8GHz or more (Recommend)
Memory	1GB or more
Hard disk	1GB of available space required on installation drive.
Disk operation	USB
Applicable controllers	RDV-X / RDV-P

Note 1. SP1 (service pack 1) or higher.
Note. Windows Vista, Windows 7, and Windows 8 / Windows 8.1 are trademarks of Microsoft Corporation registered in U.S.A. and other countries.