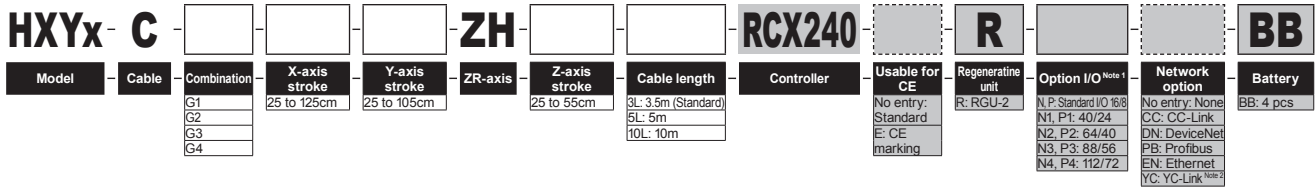


# HXYx 3 axes / ZH

● Gantry type ● Cable carrier ● Z-axis: clamped table / moving base type (200W)

## Ordering method



Note 1. N to N4 if NPN was selected, or P to P4 if PNP was selected for the I/O board.  
Note 2. Available only for the master.

## Specification

	X-axis	Y-axis	Z-axis
Axis construction <sup>Note 1</sup>	F20	F17	F14H-BK
AC servo motor output (W)	600	400	200
Repeatability <sup>Note 2</sup> (mm)	+/-0.01	+/-0.01	+/-0.01
Drive system	Ball screw (Class C7)	Ball screw (Class C7)	Ball screw (Class C7)
Ball screw lead (Deceleration ratio) (mm)	20	20	5
Maximum speed <sup>Note 3</sup> (mm/sec)	1200	1200	300
Moving range (mm)	250 to 1250	250 to 1050	250 to 550
Robot cable length (m)	Standard: 3.5 Option: 5,10		

Note 1. Use caution that the flame machining (installation holes, tap holes) differs from single-axis robots.  
Note 2. Positioning repeatability in one direction.  
Note 3. When the X-axis/Y-axis stroke is longer than 850mm, resonance of the ball screw may occur depending on the operation conditions (critical speed). In this case, reduce the speed setting on the program by referring to the maximum speeds shown in the table below.

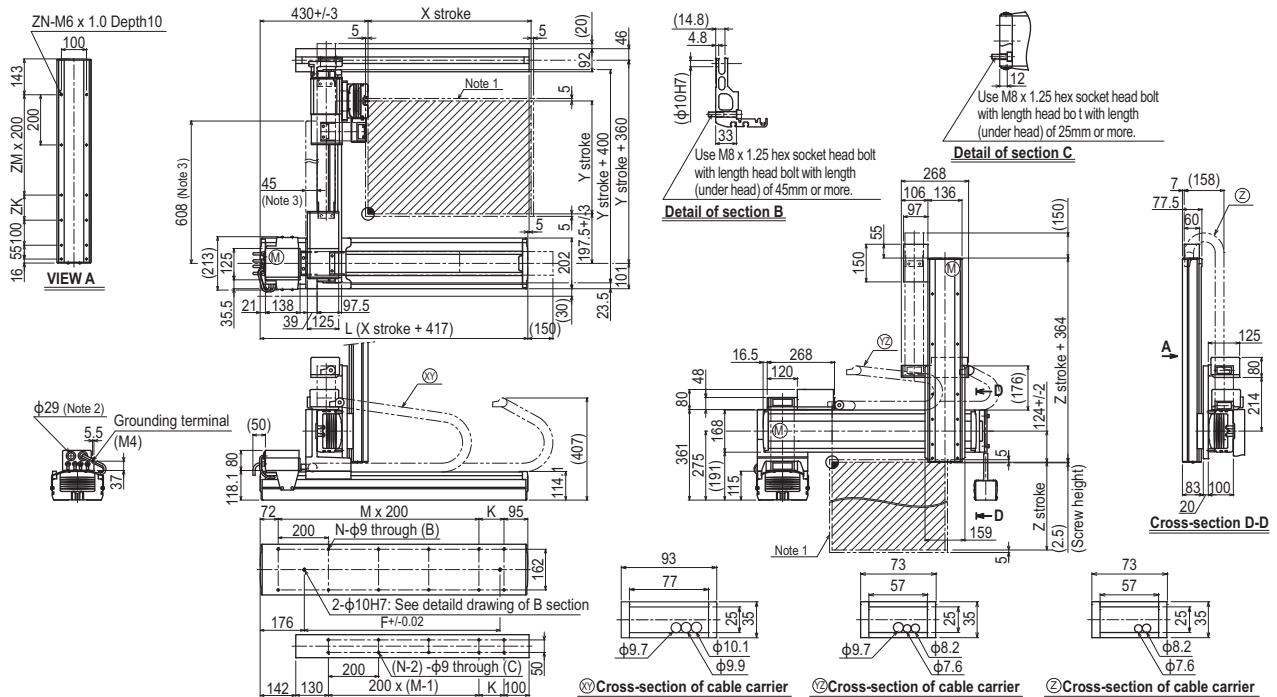
## Maximum payload (kg)

Y stroke (mm)	Z stroke (mm)
250 to 1050	30

## Controller

Controller	Operation method
RCX240-R	Programming / I/O point trace / Remote command / Operation using RS-232C communication

## HXYx 3 axes / ZH (G1)



X stroke	250	350	450	550	650	750	850	950	1050	1150	1250
	L	667	767	867	967	1067	1167	1267	1367	1467	1567
K	100	200	100	200	100	200	100	200	100	200	100
F	420	420	600	600	780	780	960	960	1140	1320	1320
M	2	2	3	3	4	4	5	5	6	6	7
N	8	8	10	10	12	12	14	14	16	16	18
Y stroke	250	350	450	550	650	750	850	950	1050		
Z stroke	250	350	450	550							
ZK	100	200	100	200							
ZM	1	1	2	2							
ZN	10	10	12	12							

Note 1. The moving range when returning to origin and the stop position when stopping by the mechanical stopper.  
Note 2. User cable extraction port.  
Note 3. Dimension of reinforced bracket (To be installed when the Y stroke is 750mm or longer)

Maximum speed for each stroke (mm/sec) <sup>Note 4</sup>	X-axis	1200					960	840	720	600	480	
	Y-axis	1200					960	840	720			
	Speed setting	-					80%	70%	60%	50%	40%	

Note 4. When the X-axis/Y-axis stroke is longer than 850mm, resonance of the ball screw may occur depending on the operation conditions (critical speed). In this case, reduce the speed setting on the program by referring to the maximum speeds shown in the table at the left.

APPLICATION  
TRANSERO  
Compact single-axis robots  
FLIP-X  
Single-axis robots  
PHASER  
Linear motor single-axis robots  
XY-X  
Cartesian robots  
YK-XG  
SCARA robots  
YP-X  
Pick & place robots  
CLEAN  
CONTROLLER INFORMATION  
Arm type  
Gantry type  
Moving arm type  
Pole type  
XZ type